



## ADVANCED AUTOMATION IN TRUSS AND BUILDING MANUFACTURING

At Black Tie Components, we take great pride in offering a comprehensive range of services tailored to meet your specific construction needs. Our trusses are designed with precise attention to detail, ensuring they align with your project specifications. By implementing rigorous quality control measures throughout the manufacturing process, we guarantee that our trusses are structurally dependable, providing you with long-lasting solutions surpassing industry standards.

Our dedicated team of experts is readily available to address any concerns and swiftly resolve any issues that may arise during the installation or utilization of our trusses. We understand the importance of keeping your projects on track, and our responsive service ensures minimal disruptions and maximum efficiency.



605-961-9270



[BLACKTIECOMPONENTS.COM](https://www.blacktiecomponents.com)

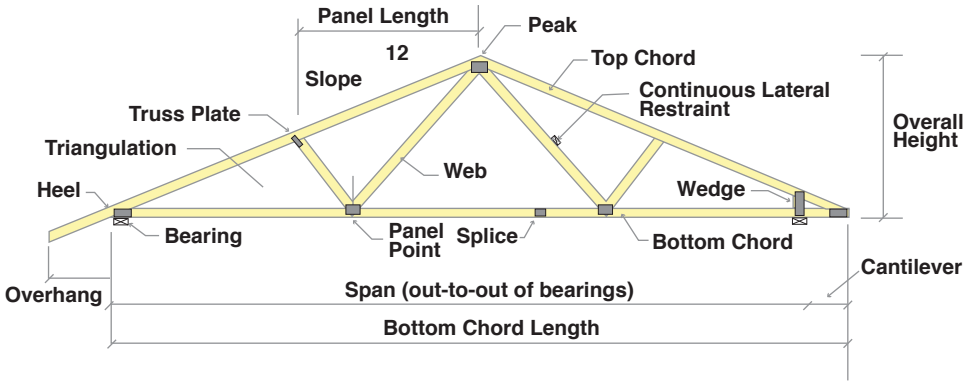


1820 N WESTERN AVE  
HARTFORD, SD 57033



## ROOF TRUSSES

Using roof trusses for your project will give you a complete flexibility in the interior room arrangement. Roof trusses details such as tray, coffer or vaulted ceiling will improve the appearance and comfort of your house. Trusses span longer than conventional framing, so you have more open space.



## FLOOR TRUSSES

Floor trusses are designed with open webs allowing easy installation of plumbing, electrical and cooling ductwork. Floor trusses are manufactured by turning the 2x4's on their side in the purpose of giving wider nailing surfaces for the floor decking. Floor trusses can be designed to accommodate different floor height for new construction or renovation.

## WALL PANELS

Building with wall panels is the most time and cost-effective way to build high-quality structures. Builders using pre-fabricated, rather than the traditional 'stick - conventional' building method, have reported an up to 33% reduction in cycle time.



### THE BLACK TIE GUARANTEE

- Every truss is engineered to meet or exceed government building code regulations.
- All trusses are manufactured in an environment that ensures strict quality control.
- Select premium-grade lumber is used for all truss web and top and bottom cords.
- Designed to accommodate your mechanical applications.
- All designs can be certified and sealed by a MiTek Professional Engineer.
- Floor Trusses manufactured with a 3-1/2" flange for maximum surface area to minimize vibration.



**LET US HELP AUTOMATE  
AND STREAMLINE YOUR  
BUILDING NEEDS**